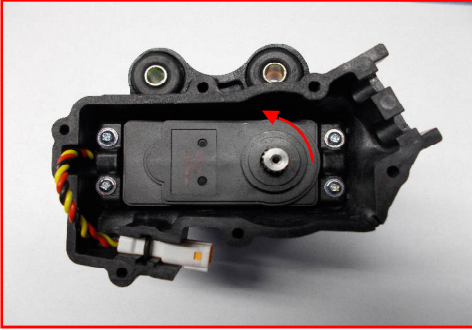
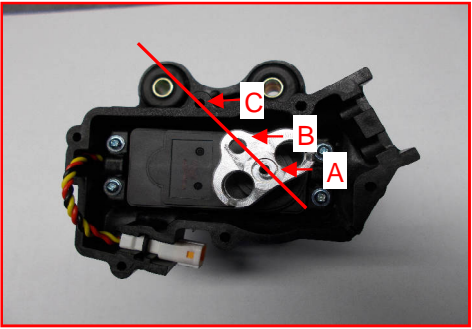


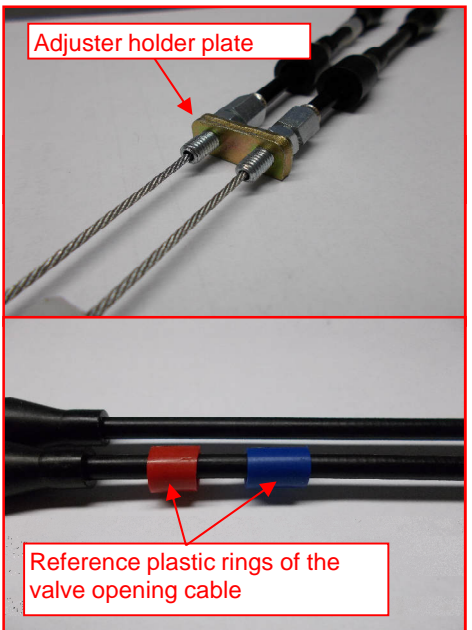
PULLEY AND CABLES ASSEMBLY ON SERVMOTOR



Turn CCW the servomotor shaft until it stops.



Assemble the pulley on servomotor shaft in a way that the pulley screw A, the reference hole B and the cover screw C are on the same line.

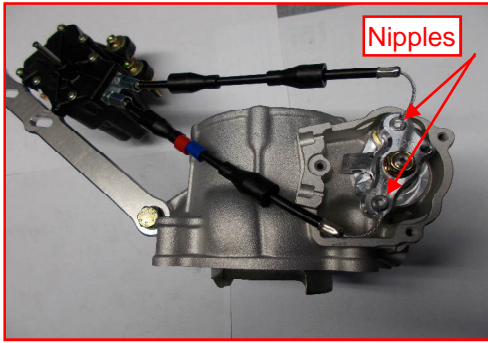


Adjuster holder plate

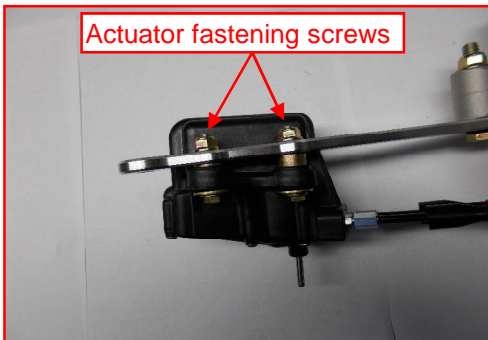
Reference plastic rings of the valve opening cable

Put some grease on the cables nipples, assemble them on the servo pulley taking care of the correct cables position. The closing cable, indicated by the reference plastic rings, must be assembled in the lower hole of pulley. A further check of correct assembling is that the adjusters holder plate is located with its radiused corners towards the inside of the case, fitting perfectly to its seat. Assemble the case cover.

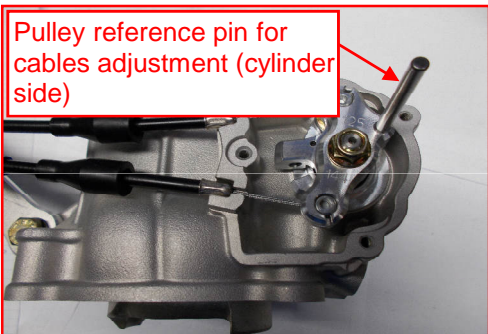
EXHAUST VALVE ACTUATOR INSTALLATION



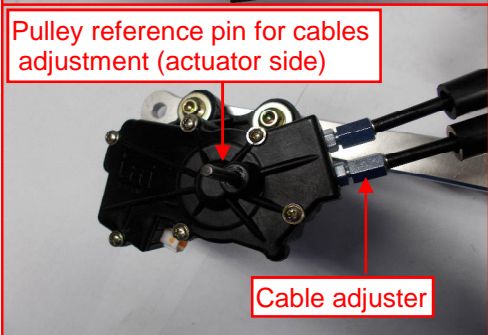
Put some grease on the cables nipples (cylinder side) and assemble them to the cylinder pulley.



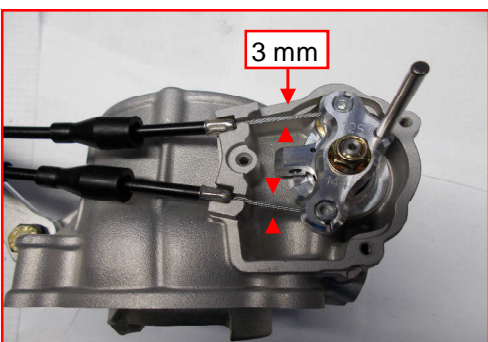
Assemble the actuator on the mounting bracket, tighten the two screws and loosen them a little to let the actuator slide along the adjustment slots.



Place both the pulleys (actuator and cylinder) with their pin holes aligned with the reference holes on actuator and cylinder and slide in the pins to start the cables adjustment.

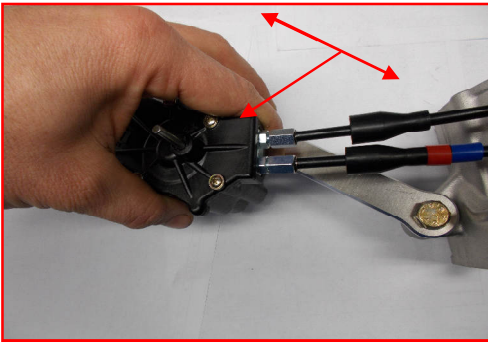


In the Mx End 125-144 models, the positioning of the actuator pulley, included the pin removal, must be done before assembling the actuator on the mounting bracket (due to lack of space for the pin between chassis and actuator), the stall torque of the motor will keep the correct position of the pulley while adjusting the cables.



Adjust the cables tension by using the adjusters until you reach an oscillation of each cable of around 3mm.

Remove the pins and double check the cable tension, if necessary slightly re-adjust again.
Tighten the adjusters nuts.



Move the actuator in a way that the cables lay as straight as possible.

Tighten the actuator fastening screws.

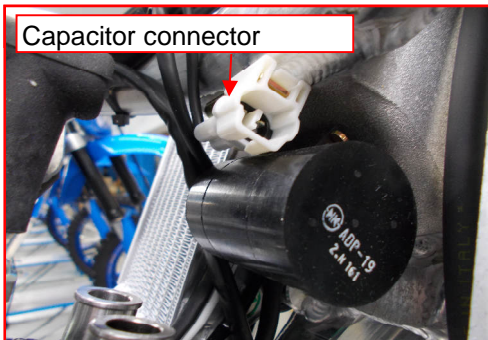
SYSTEM OPERATING RANGE SETUP 0% - 100%



Before starting the engine, it is necessary to store in the exhaust valve control unit the end-stroke points. This must be always done after each service operation: cables adjustment or replacement, disassembling of system from the bike, etc.

A 12V battery is required.

Connect the optional wiring harness TM Part Number: 68193 for all the 125cc, 144cc, 250cc and 300cc models. 68192 specific for 250cc and 300cc



Operating instructions using the optional wiring harness P/N 68193:

Disconnect the capacitor, located under the fuel tank, from the bike wiring harness and connect to the optional wiring harness previously connected to the 12V battery.

After around 4 seconds the system start the self-storing operation which consists of 3 steps:

- 1 the exhaust valve is moved to the closing point
- 2 the exhaust valve is moved to the max. opening point
- 3 the exhaust valve is moved again to the closing point.

Now the system is ready, disconnect the battery and connect the capacitor.



Operating instructions using the optional wiring harness P/N 68192:

The 250cc and 300cc models are provide with a specific power supply connector to perform the exhaust valve setup without disconnecting the capacitor.

Once the battery is connected, the self-storing operation consists of the same steps as described in the previous section.